

## INTRODUCTION

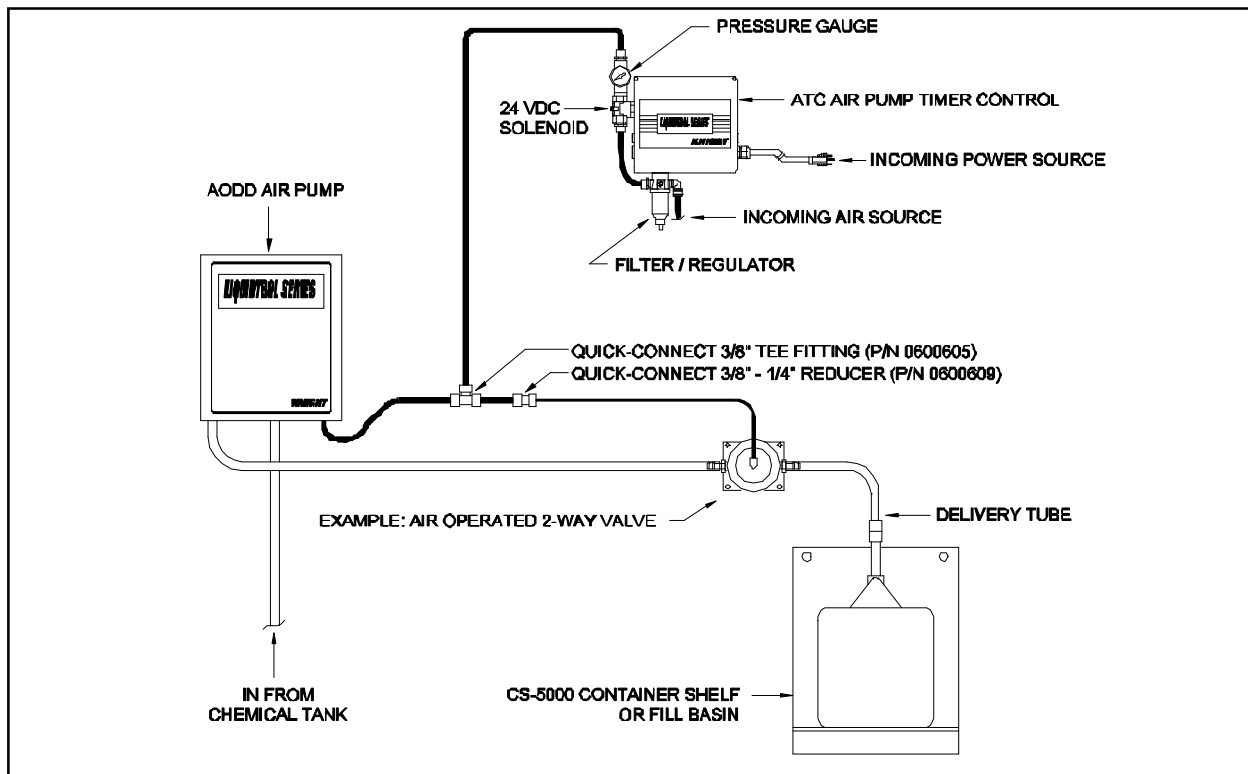
The AODD-50/25 Air Operated Double Diaphragm Pumps are built into a #304 stainless steel case to provide protection and aesthetic value. The flip-down cover allows quick and easy access to the pump for installation, maintenance, or inspection purposes. Pumps can be coupled with any one of Knight's Air Pump controls to cover a wide variety of applications, such as Track/Conveyor Lube Feed, Waste Water Treatment, Food & Beverage Process Sanitation, and General Industrial use.

## INSTALLATION

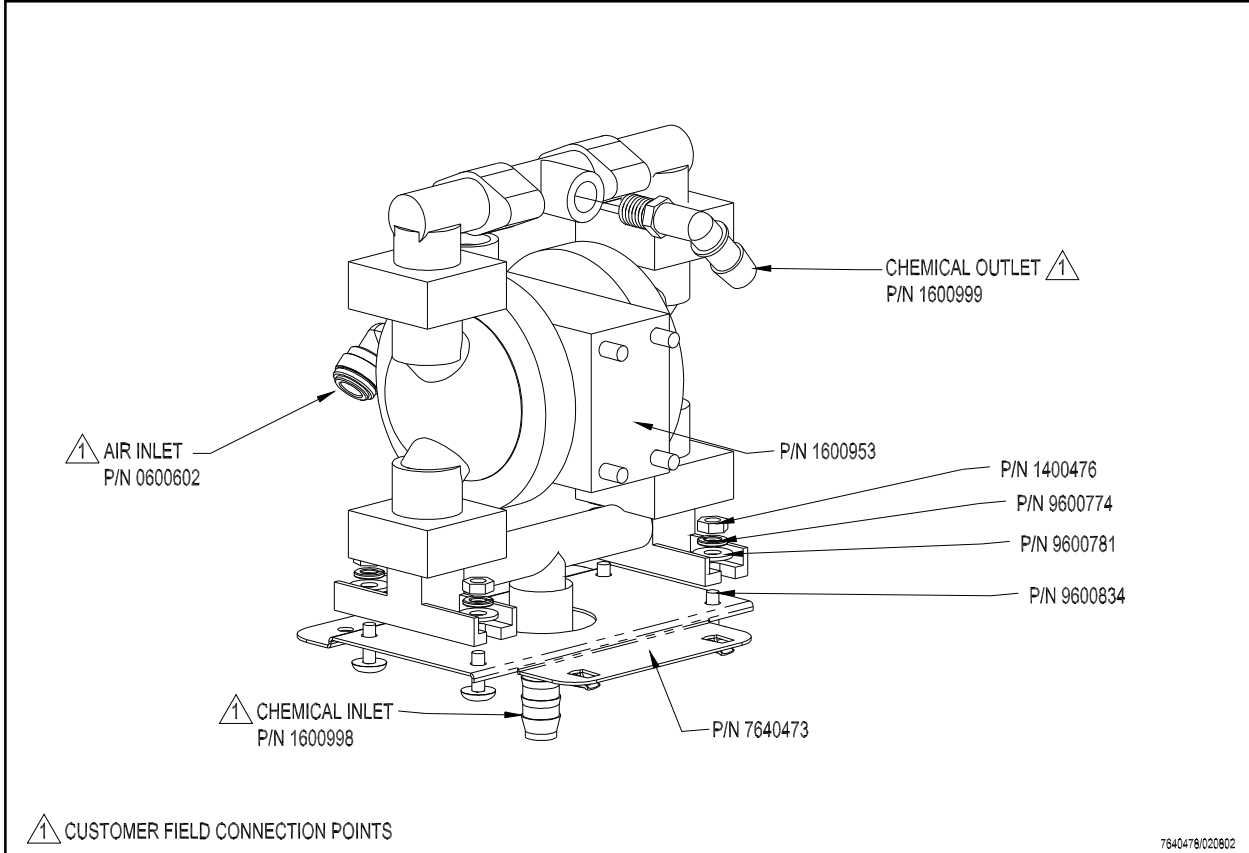
These air pumps should be installed to the original manufacturers specifications (see Sandpiper manual enclosed). General application guidelines are listed below:

- Maximum height (suction) from product source = 8 feet (2.43 Meters)
- Optimal operating pressure = 80 PSI (5.5 Bar)
- Maximum Viscosity = 180 Centipoise
- Materials of construction = The 1/4" and 1/2" air operated pumps include a polypropylene pump body and center section, PTFE diaphragm, balls and seal. These materials are highly rated for corrosive and non-corrosive liquids.

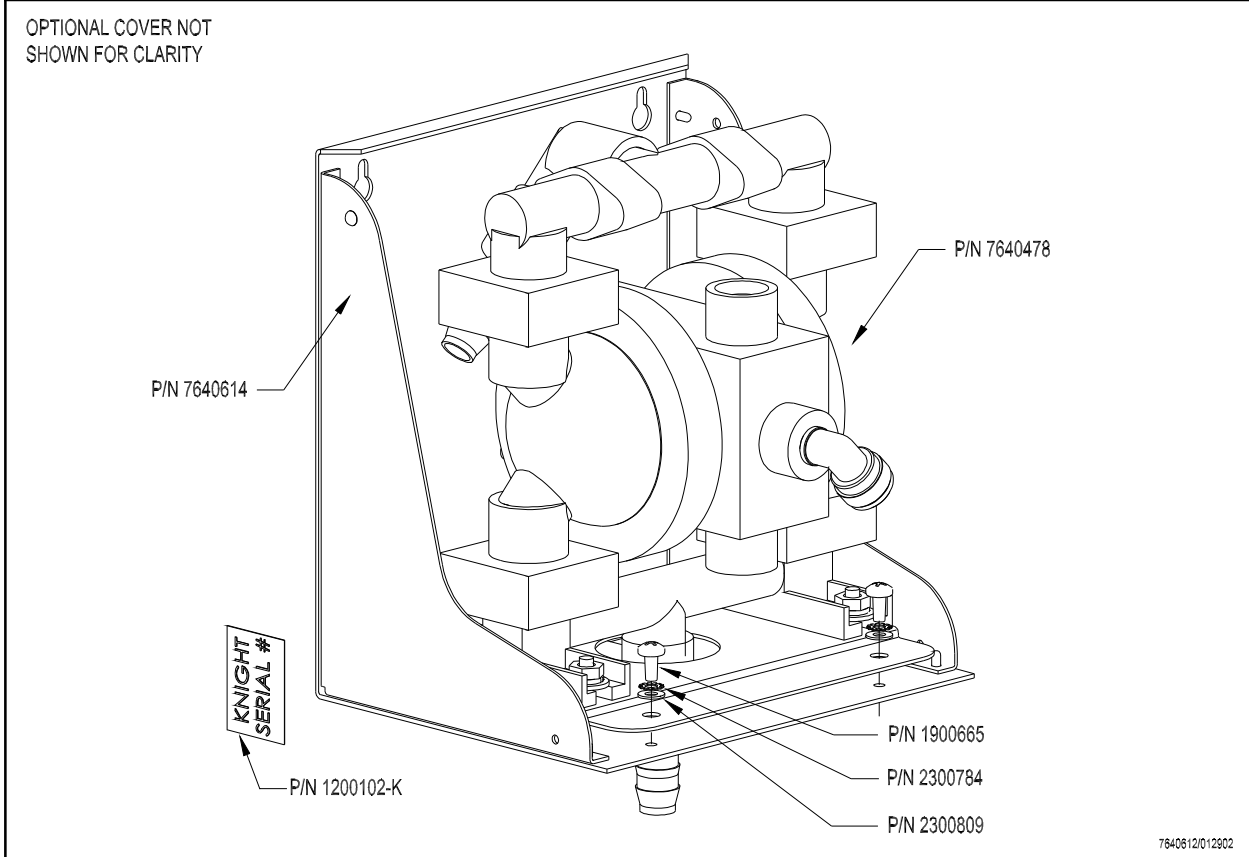
A typical application is shown in the diagram below as an installation example of how the pump can be interfaced with a Knight Air Pump Timer Control. The diagrams on pages 2 – 3 are primarily for parts ordering, however also serve as detailed reference for locating air and chemical connections.



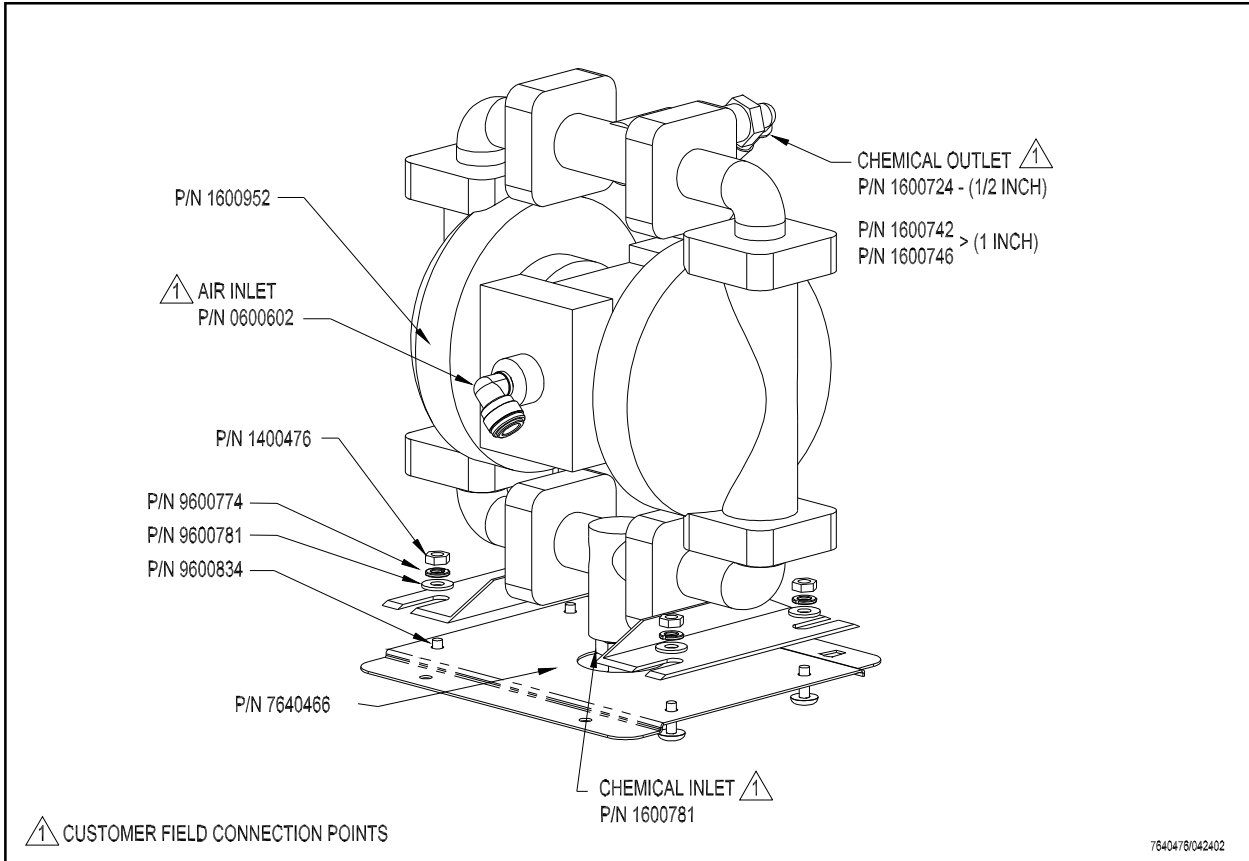
# AODD 25 PARTS DIAGRAM



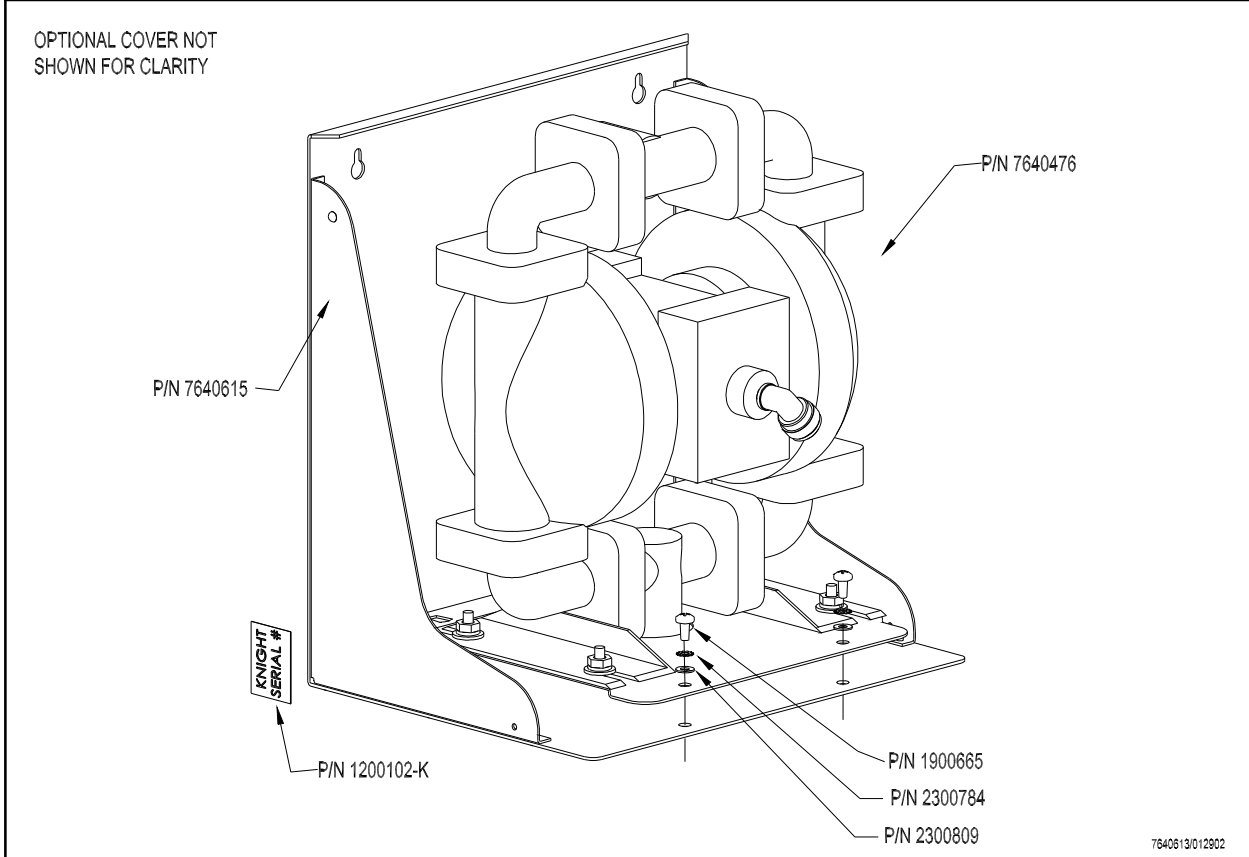
OPTIONAL COVER NOT SHOWN FOR CLARITY



# AODD 50 PARTS DIAGRAM



7640478/042402



7640613/012802

---

## DISCLAIMER

Knight LLC does not accept responsibility for the mishandling, misuse, or non-performance of the described items when used for purposes other than those specified in the instructions. For hazardous materials information consult label, MSDS, or Knight LLC. Knight products are not for use in potentially explosive environments. Any use of our equipment in such an environment is at the risk of the user, Knight does not accept any liability in such circumstances.

## WARRANTY

All Knight controls and pump systems are warranted against defects in material and workmanship for a period of ONE year. All electronic control boards have a TWO year warranty. Warranty applies only to the replacement or repair of such parts when returned to factory with a Knight Return Authorization (KRA) number, freight prepaid, and found to be defective upon factory authorized inspection. Bearings and pump seals or rubber and synthetic rubber parts such as "O" rings, diaphragms, squeeze tubing, and gaskets are considered expendable and are not covered under warranty. Warranty does not cover liability resulting from performance of this equipment nor the labor to replace this equipment. Product abuse or misuse voids warranty.

## FOOTNOTE

The information and specifications included in this publication were in effect at the time of approval for printing. Knight, LLC reserves the right, however, to discontinue or change specifications or design at any time without notice and without incurring any obligation whatsoever.

---

**KNIGHT LLC, A Unit of IDEX Corporation ([www.knightequip.com](http://www.knightequip.com))**

<b>Knight Headquarters</b> Tel: 949.595.4800 Fax: 949.595.4801	<b>USA Toll Free</b> Tel: 800.854.3764 Fax: 800.752.9518	<b>Knight Canada</b> Tel: 905.542.2333 Fax: 905.542.1536	<b>Knight Europe</b> Tel: 44.1293.615.570 Fax: 44.1293.615.585	<b>Knight Australia</b> Tel: 61.2.9725.2588 Fax: 61.2.9725.2025	<b>Knight N. Asia</b> Tel: 82.2.3481.6683 Fax: 82.2.3482.5742	<b>Knight S. Asia</b> Tel: 65.6763.6633 Fax: 65.6764.4020
--	--	--	--	---	---	---

---